

## Design, Operation and Performance of a Fabry-Perot-Based MWIR Microspectrometer

Martin Ebermann<sup>1</sup>, Karla Hiller<sup>2</sup>, Steffen Kurth<sup>3</sup>, Norbert Neumann<sup>1</sup>

<sup>1</sup> InfraTec GmbH, Gostritzer Strasse 61-63, 01217 Dresden, Germany

<sup>2</sup> Chemnitz Univ. of Technology, Center for Microtechnologies, 09107 Chemnitz

<sup>3</sup> Fraunhofer Institute for Reliability and Microintegration, Reichenhainer Strasse 88, 09126 Chemnitz

### Abstract

In this paper we present basic designs, operation concepts and some application examples of a novel microspectrometer for the spectral range of 3-5 $\mu\text{m}$ , which is based on a pyroelectric detector with an integrated micromachined Fabry-Perot filter (FPF). We discuss the influence of different optical setups on the spectral resolution and the signal-to-noise ratio of the microspectrometer. Two basic operation modes, step-scan mode and continuous-sweep mode are demonstrated. Such a device has a large potential in the field of infrared absorption spectroscopy, particularly if multicomponent mixtures have to be analyzed.

### Introduction

Infrared absorption spectroscopy is well established in gas analysis, fire and flame detection and in many other applications. A typical infrared analyzer consists of a broadband light source, a sample cell and at least one but in most cases several spectral measurement channels with fixed narrow bandpass filters. The filters are selected to match the characteristic absorption bands that are of interest in each specific application. This is often realized by using detectors with several spectral channels or a rotating filter wheel in front of a single channel detector.

The increasing demand in collecting more and more spectral information, reducing cross sensitivities, making measurements faster and last but not least in miniaturization of such systems is challenging. The above mentioned conventional approach mainly suffers from the disadvantage, that the number of channels is limited. There are several well known problems, for example regarding a homogeneous detector illumination and long-term stability. Filter wheels cannot be miniaturized and their reliability is not sufficient.

What in fact is needed is a low resolving, robust and low cost microspectrometer for the mid-wave infrared range. Many approaches for microspectrometers are based on diffraction gratings [1]. Attempts to miniaturize the FTIR technique have also been reported [2]. Some of these solutions offer a relatively high spectral resolution and fast measurements, but the degree of integration and miniaturization is often not very high.

Many attempts towards the combination of a Fabry-Perot interferometer and an IR-detector have also been reported [3, 4, 6], but in most cases they suffer from a low Finesse due to warping of thin membrane reflectors or low optical throughput.

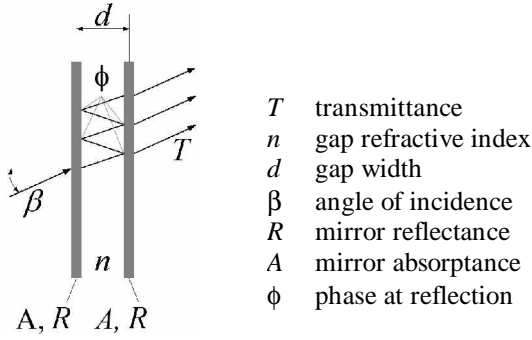
Our approach, the hybrid assembly of a bulk micromachined Fabry-Perot Filter (FPF) and a pyroelectric detector, results in a very compact spectrometer module. Existing instrument designs can be easily adapted to the new tunable detector. In this paper we present the basic design and operation concept of such a microspectrometer for the spectral range of 3-5  $\mu\text{m}$ .

### Tunable detector

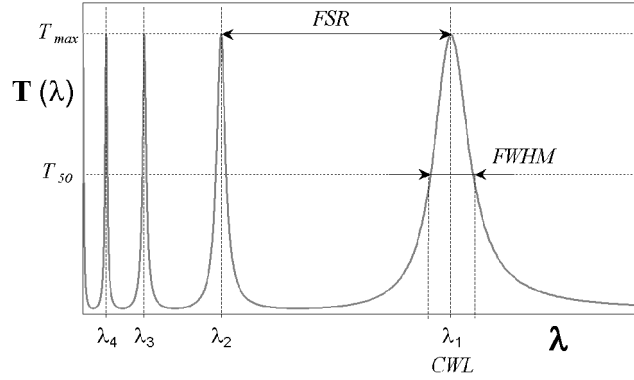
#### 1.1 FABRY-PEROT INTERFEROMETER FUNDAMENTALS

The tunable detector is based on the well-known Fabry-Perot Interferometer (FPI), schematically shown in Fig. 1. Two flat and partially transmitting mirrors with reflectance  $R$  are arranged in parallel at a distance  $d$ , forming an optical gap characterized by the refractive index  $n$ . Multiple-beam interference is created inside the gap and thus only radiation can be transmitted, which satisfies the resonance condition according to equation (1). One of the mirrors is suspended by springs so that the distance  $d$  can be decreased by applying a control voltage. As the resonance condition changes; so does the wavelength of the transmitted radiation, neglecting the phase at reflection  $\phi$ :

$$\lambda_m = \frac{2 n d \cos \beta}{m} \quad (1)$$



**Fig. 1:** Schematic of the FPI arrangement



**Fig. 2:** Airy-function over wavelength

The transmittance spectrum  $T(\lambda)$  of a FPI is described by the Airy-Function (eq. 2).

The center wavelength ( $CWL$ ) of the filter corresponds to the resonant wavelength. In our case the first interference order is used ( $m=1$ ) while the higher orders are blocked by means of an additional band-pass filter. The spectral bandwidth ( $FWHM$ ) is the decisive factor regarding the spectral resolution of a FPF-based spectrometer (eq. 3).

The spectral distance of two adjacent interference peaks limits the maximum usable tuning range. This is denoted as the free spectral range ( $FSR$ ). The ratio of the tuning range to the bandwidth (in the wavenumber domain) is given as the Finesse ( $\tilde{F}_k$ ), which is the figure of merit of a Fabry-Perot interferometer (eq. 3).

$$T = \left(1 - \frac{A}{1-R}\right)^2 \frac{1}{1 + \frac{4R}{(1-R)^2} \sin^2\left(2\pi n d \frac{1}{\lambda} \cos \beta - \phi\right)} \quad (2)$$

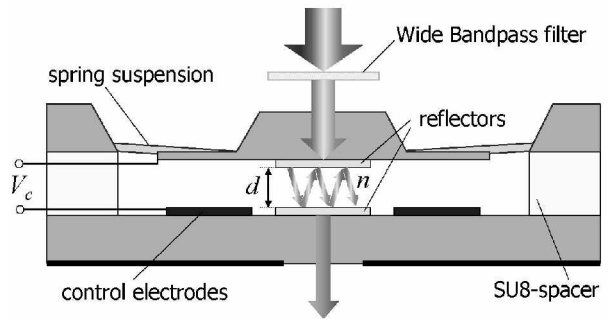
$$FWHM \approx 2d \left(\frac{1-R}{\pi \sqrt{R}}\right) \quad (3)$$

$$\tilde{F}_k = \frac{FSR}{FWHM} = \frac{\pi \sqrt{R}}{1-R} \quad (4)$$

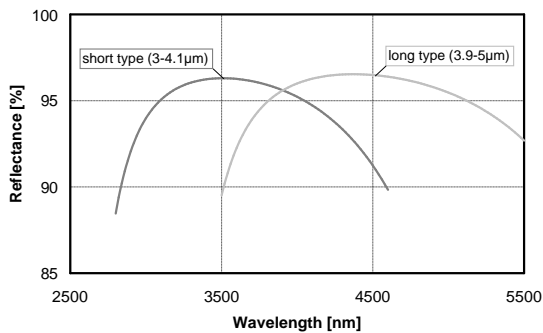
## 1.2 DESIGN AND FABRICATION

The filter is fabricated with bulk micromachining technology [5]. Two optical and mechanical structured wafers are bonded together by an intermediate SU8-layer. The stiffness of the thick reflector carriers allows us to realize a large aperture of 1.9 mm and a Finesse of 40 up to 60.

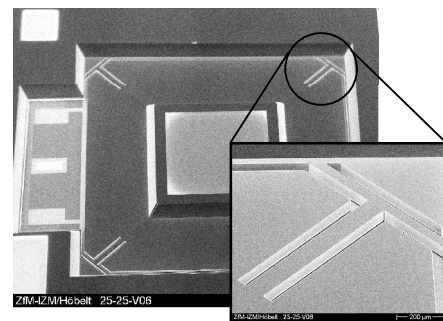
**Fig. 3:** Schematic cross-section of the MOEMS FPF



The reflectors are made from dielectric layer stacks with quarter-wave optical thickness and alternating low and high refractive index (distributed bragg reflectors). By using a double-stack  $|LH|^2$  of silicon dioxide ( $n=1.38$ ) and polycrystalline silicon ( $n=3.33$ ), a broad high reflective zone was achieved (see Fig. 4).



**Fig. 4:** Reflectance of  $\text{SiO}_2/\text{Poly-Si} |LH|^2$  bragg reflectors for a spectral range of 3-4.1  $\mu\text{m}$  and 3.9-5  $\mu\text{m}$



**Fig. 5:** Stress compensating spring design

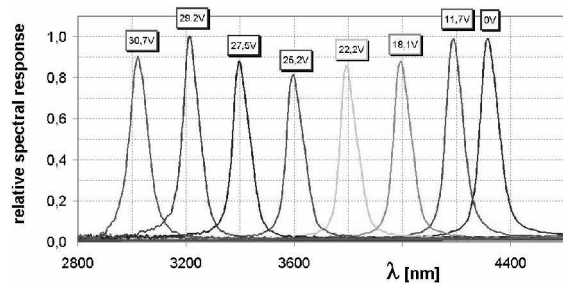
One of the most important aspects concerning the mechanical design of the filter is to guarantee the parallel reflector alignment over the entire tuning range. For this purpose various types of spring configurations have been tested. In the best solution, T-shaped stress compensating elements were used, resulting in a simple design and fabrication technology (see Fig. 5).

### 1.3 SPECTRAL PERFORMANCE

Two types of FP-Filters have been realized, each covering a portion of the entire wavelength range from 3-5  $\mu\text{m}$ . Performance data listed in the table 1 are typical values, which are achievable in series production. Tuning the CWL of the FPF results in a variation of the *FWHM* and the peak transmission within certain limits. The additionally wide band pass filter and pyroelectric detector element show some spectral characteristics. The spectral response of the detector is therefore a combination of different factors, but has to be considered as a whole in the application. It is stated as the relative spectral response, referring to a 'black' reference detector with a flat spectral response (see Fig. 6).

	short type	long type
<b>Tuning range</b>	3...4.1 $\mu\text{m}$	3.9...5 $\mu\text{m}$
<b>FWHM</b>	80 $\pm$ 20nm	100 $\pm$ 20nm
<b>Peak-Transmittance</b>	> 50 %	
<b>Out-of-band blocking</b>	< 0.5 %	
<b>Finesse</b>	40...60	

**Table 1:** spectral performance data; measured with FTIR spectrometer, 8 $\text{cm}^{-1}$ ,  $\pm 4^\circ$  div. angle



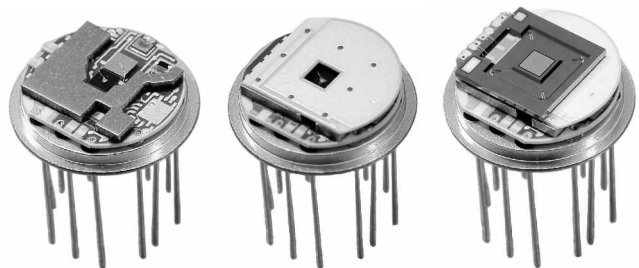
**Fig. 6:** spectral response of a short type FP-detector at several tuning voltages; FTIR, 8 $\text{cm}^{-1}$ ,  $\pm 4^\circ$  div. angle

### 1.4 PYROELECTRIC DETECTOR

The built-in LiTaO<sub>3</sub>-based pyroelectric detector is a state of the art thermally compensated current-mode type with an integrated low-power and low-noise CMOS Op-Amp. It exhibits high specific detectivity and a flat frequency response up to several tens of Hz. The element size is 2x2mm<sup>2</sup>.

	without FP-filter	FP-filter included
<b>Frequency response</b>	flat up to 40Hz	
<b>Noise</b> [ $\mu\text{V}/\text{Hz}^{1/2}$ ]	65	
<b>Responsivity R<sub>v</sub></b> [kV/W]	120	2.5
<b>Detectivity D*</b> [ $\text{cm Hz}^{1/2}/\text{W}$ ]	3.7·10 <sup>8</sup>	7.7·10 <sup>6</sup>

**Table 2:** detector performance; 400°C blackbody, 10Hz; responsivity attenuation with FP-filter  $\approx$ 2%



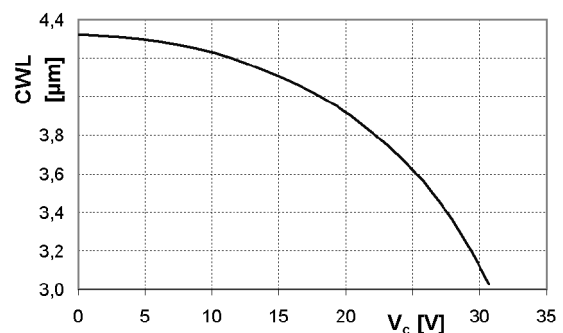
**Fig. 7:** stages of the detector assembly

The high impedance circuit of the detector trans-impedance amplifier has to be protected from cross-talk caused by the FPF driving voltage. Therefore; an electrical shielding is implemented in the detector assembly. A special mounting technology prevents the FP-filter from warping due to mechanical stress.

### 1.5 FILTER OPERATION

The filter is actuated electrostatically. An applied tuning voltage  $V_c$  results in an electrostatic force decreasing the gap. In the case of steady state, a typical non-linear characteristic tuning curve is produced.

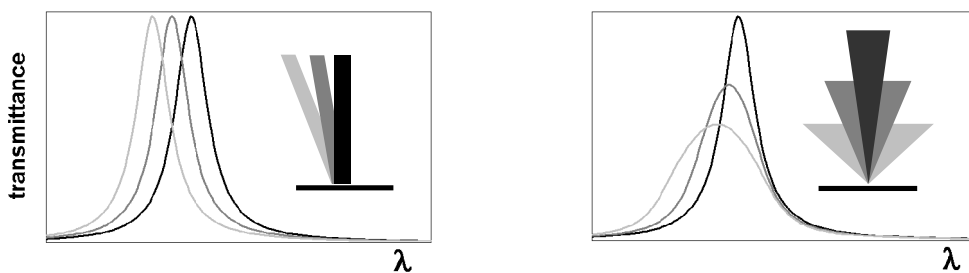
**Fig. 8:** Quasistatic CWL tuning characteristics



## Spectrometer Design

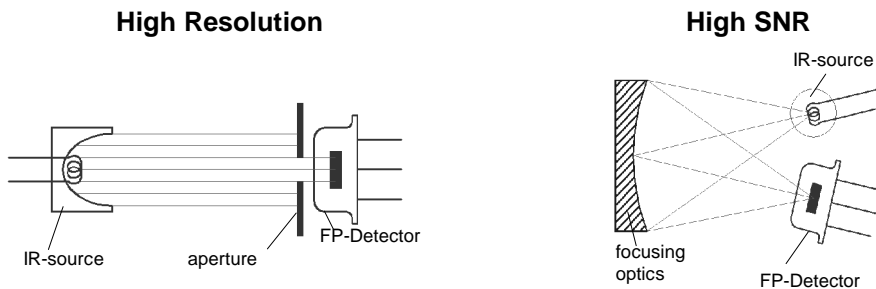
The concept of a FPF-based microspectrometer is basically very simple and naturally similar to conventional NDIR-analyzers. It incorporates an infrared source, which is preferably electrically modulated, a sample cell, the tunable detector and a control unit. Nevertheless, some specific issues regarding the proper choice of the IR-source and the optical set-up need to be considered.

There is a trade off between the optical throughput, with it the signal-to-noise ratio SNR, and the spectral resolution, a principle, which is in fact valid for all spectrometric applications. In the case of the FP-detector this is associated with the problem of collimation or divergence angle of detector illumination. A collimated but oblique incident beam causes a negative drift of the CWL (see Fig. 9 left). The most common case is an uncollimated beam with a certain angle of divergence and intensity profile. The resulting transmittance spectrum can be seen as the superposition of collimated ray-beams with different angles of incidence and intensities. It has a broader FWHM and the CWL at slightly lower wavelengths (see figure 9 right).



**Fig. 9:** Influence of angle shift and divergence angle on bandwidth and peak transmittance of a FPF

Beam divergence can be minimized by using a light source with collimated output or by means of an additional prefixed aperture (Fig. 10 left). If the desire is to maximize the optical throughput, then focusing optics can be used, but larger divergence angles will be a side effect (Fig. 10 right). Obviously a compromise between spectral resolution and signal-to-noise ratio (SNR) needs to be found for each particular application.



**Fig. 10:** Possible optimizations for the optical design of a microspectrometer with FPF detector

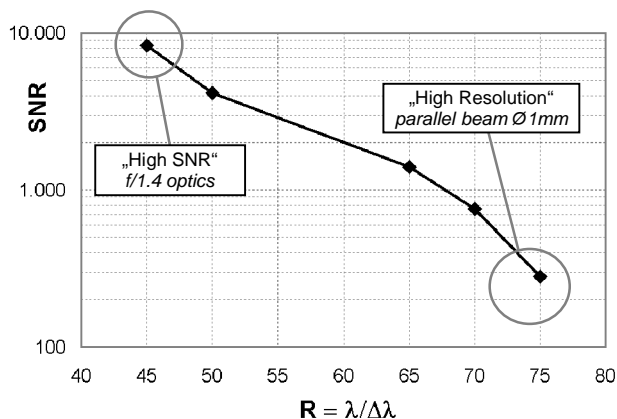


Figure 11 shows the correlation of the achievable SNR with a given spectral resolution, measured with two tested measurement setups according to figure 10. Please note that a parallel beam with a diameter of 1 mm offers the highest spectral resolution but only 3 % of the intensity and thus the resulting low detector signal voltage compared to an illumination using f/1.4 optics

**Fig 11:** SNR vs. spectral resolution LFP-3041-337 with a modulated IR source

## Spectrometer Operation

The capabilities of a tunable detector are numerous. Depending on the measurement task and operation mode, different advantages compared to conventional single or multi channel detectors with fixed NBP filters can be found. Two basic operation modes shall be explained in detail:

### 1.6 Step scan mode

This method is the very same as applied for conventional detectors, using a modulated light source and Lock-In or FFT algorithms. In addition to this we now switch the filter wavelength between the measurement points until we get the whole spectrum. The required acquisition time for the mapping of a

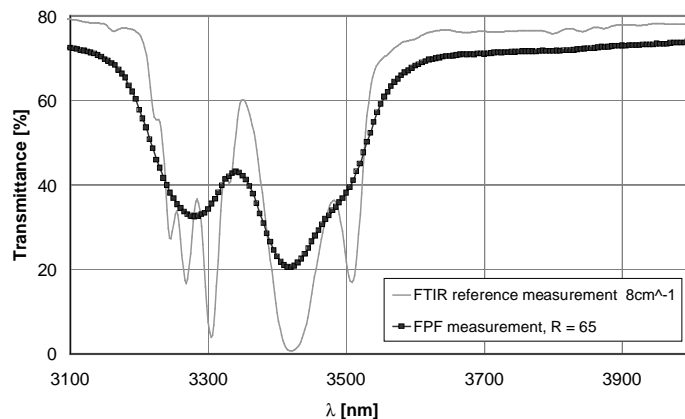


Fig 12: Step-Scan measurement of a polystyrene foil

spectrum depends on wavelength range and step size on one hand side and on modulation frequency and integration time to achieve the desired SNR on the other. Figure 12 gives an example for the step scan operation. The IR source (Intex MIRL17-900 reflector 900mW) is modulated with 10 Hz, while the filter is scanning the desired wavelength range from 3000-4000 nm at 100 steps (step size 10 nm). The acquisition of the spectrum needs 20 s. The achieved spectral resolution  $\lambda/\Delta\lambda$  is about 65 and the signal-to-noise ratio about 1300:1.

### 1.7 Continuous sweep mode

By using a pyroelectric detector only modulated radiation can be analyzed. Normally this is realized by mechanical chopping or electrical modulation of the IR source. If the filter is, however, continuously swept the spectral information can be used directly for the modulation. The filter is actuated dynamically in this case. This particular operation mode has principally the potential to accelerate the recordings

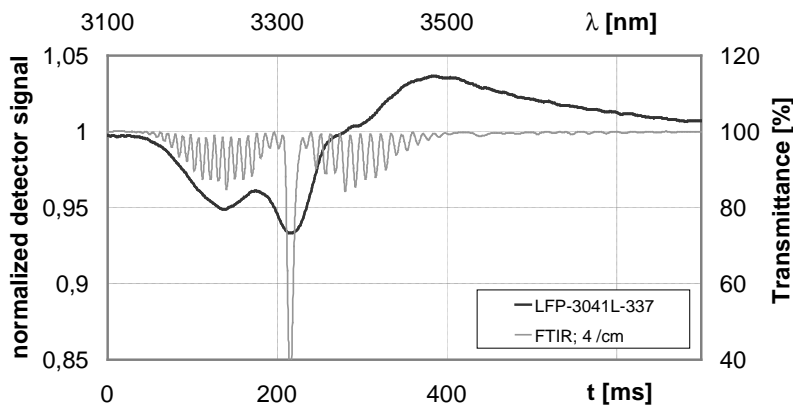


Fig 13: Measurement example for the continuous scan mode with dynamic filter tuning (2.2 vol% methane)

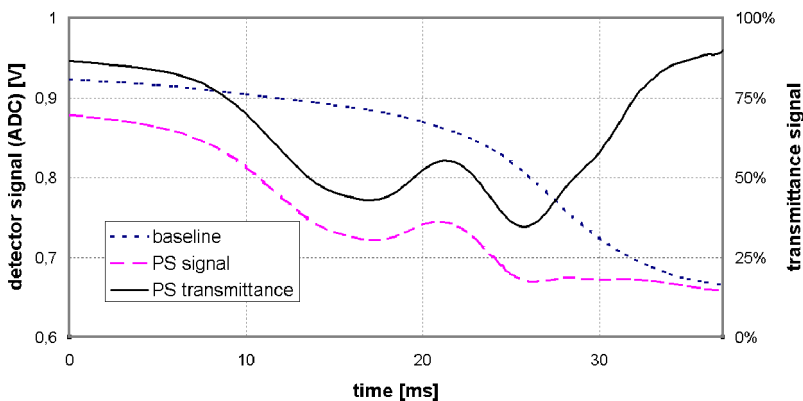
of spectra remarkably. The non-linear effects during dynamic operation, however, need to be considered separately.

Figure 13 gives an example for the continuous sweep mode. The IR source is working in DC operation, while the filter goes through the desired wavelength range. Except for the DC portion, the whole spectral information is contained in the generated detector signal. The actuation and analysis has to include both the dynamic properties of the filter and the detector.

There is a large field of applications where speed is much more important than accuracy. One example could be the detection of a thin oil film on a steel substrate, another the assorting of polymer fractions. Often it is sufficient to detect the presence of a certain absorption band and to compare with one or two neighbored reference wavelength. With our tunable detector this can be solved by fast switching or sinusoidal modulating the filter wavelength. Figure 14 shows such an exemplary solution. The control voltage of the filter (dashed curve) is modulated in such a way, that the filter wavelength varies between 3,8 $\mu$ m and 3,0 $\mu$ m within 50ms. Without any sample in the optical path, the detector gives only a small signal (baseline, dotted curve). When inserting the sample (PE-LD foil, 10 $\mu$ m) in the path strong ab-



**Fig 14:** Fast sweep measurement example; PE-LD foil 10 $\mu$ m IR-source Intex M1RL17-900 800mW DC; tuning frequency 20Hz



**Fig 15:** Fast sweep measurement example; PS foil, InAs Detector (Judson J12TE2)  $-30^{\circ}\text{C}$ , IR-source IonOptics Reflect-IR 2,2W DC

sorption peaks appear in the signal (solid curve) that correspond to the absorption line of the PE-LD sample around 3,4 $\mu$ m.

The spectral resolution of the system deteriorates with increasing tuning rates because of the relatively low bandwidth of the pyroelectric detector. In applications where spectral resolution and speed are both of importance the usage of a fast photodiode might be required. We made measurements with a stand-alone FPF in a transmission package and an Indium Arsenide Detector to investigate the potential of such a configuration. Figure 15 shows the transmission measurement of a polystyrene foil. The transmittance signal is calculated by offset subtraction and division of sample and baseline signal. In comparison with the measured spectrum in Fig.12 one can see, that this measurement contains also all spectral information but can be performed in less than 50ms. Due to the dynamic nonlinearities of the FPF the filter tuning is not ideal linear. This causes a certain distortion of the spectrum along the time axis, which might be compensated by a better adapted voltage actuation or by software.

## Summary

The tunable infrared detector is based on a bulk micromachined spectrally tunable Fabry-Perot interferometer with an air cavity, which is electrostatically tuned and combined with an pyroelectric infrared detector. This ensures low cost, small size and high optical performance. We demonstrated the flexible use of the tunable detector in gas analyzers and spectroscopic applications. According to the optical setup and the operation mode high signal-to-noise-ratios of up to 8000:1 and spectral resolution  $\lambda/\Delta\lambda$  of up to 75 were achieved. Continuously sweeping the Fabry-Perot filter opens up new capabilities of a pyroelectric detector. This particular operation mode has principally the potential to accelerate the recordings of spectra remarkably. New application fields include medical diagnostics and detection of hazardous substances in industrial and security environments.

## References

- [1] S.H. Kong, D.D.L. Wijngaards, R.F. Wolffenbuttel, "Infrared micro-spectrometer based on a diffraction grating", *Sens. Actuators, A* 92-1, 88-95, (2001)
- [2] T. Sandner, H. Schenk, H. Lakner, A. Kenda, W. Scherf, „Einsatz translatorischer MOEMS-Aktoren für FTIR-Spektrometer“ *Proc. MikroSystemTechnik KONGRESS 2007*, VDE-Verlag, 2007, 485-488
- [3] D. Rossberg, "Silicon micromachined infrared sensor with tunable wavelength selectivity for application in infrared spectroscopy", *Sens. Actuators, A* 47, 413-416, (1995)
- [4] M. Noro, K. Suzuki, N. Kishi, H. Hara, T. Watanabe, and H. Iwaoko, "CO<sub>2</sub>/H<sub>2</sub>O gas sensor using tunable Fabry-Perot filter with wide wavelength range", *Proc. IEEE MEMS 2003 Conf.*, 319-322 (2003)
- [5] N. Neumann, M. Ebermann, Kurth, K. Hiller, S., "Tunable infrared detector with integrated micromachined Fabry-Perot filter", *J.Micro/Nanolith. MEMS MOEMS* 7(2), 021004-01 - 021004-9 (2008)
- [6] H. K. Lee, K. S. Kim, I. J. Cho, and E. Yoon, "A wide range linearly-tunable optical filter using magneteic actuation", *Proc. MEMS 2004*, 93-96 (2004)
- [7] H. Günzler, H.-U. Gremlich, *IR-Spektroskopie*, Wiley-VCH, Weinheim, 2003